

AW139 Helicopter

PUREair System

The Ultimate in Engine Protection

The AW139 helicopter is used in a variety of roles including executive transport, Search and Rescue and Emergency Medical Services (EMS). These demanding rescue operations can mean anxious minutes spent hovering close to the sea or ground, as well as frequent landings on unprepared surfaces.

These helicopters have to be ready 24/7 for rapid dispatch to any location. Their mission cannot be delayed or restricted by a blocked filter so they require a maintenance free engine protection system.

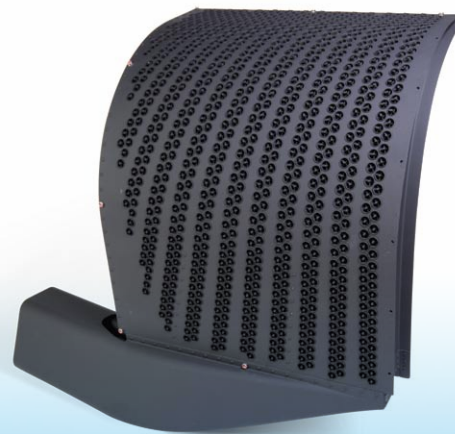
The *PUREair* system is the perfect solution for such challenging operations.

It provides the highest level of engine protection which results in:

- Reduced maintenance & operational costs
- Increased operational availability & reduced downtime
- Increased engine reliability
- Safer operation (protection against FOD, ice, snow and sand)
- Protection against engine erosion



PUREair system for the AW139 helicopter



PUREair

FEATURING  TECHNOLOGY
Aerospace

Product Details

Pall P/N: QB0685-1 (Port), QB0686-1 (starboard)

Product available as a factory option for new build helicopters.

Scavenge System: Ejector Scavenge.

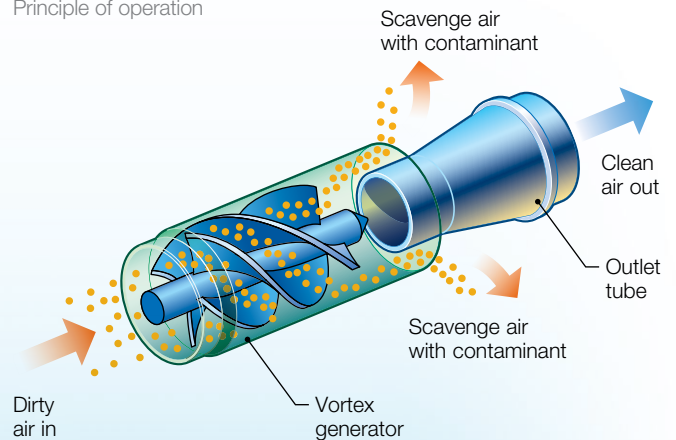
Certified for inadvertent entry into icing conditions.

No bypass door required.

Approval: FAR 27 certification to RTCA-DO160C.

PUREair Vortex Tube

Principle of operation



The *PUREair* system benefits:

Self Cleaning System

No barrier filters to clean /replace

Constant Removal Efficiency

Non-bypass system. No degradation in filtration performance

No Filter Blockage

PUREair pressure drop does not increase with use - no risk of in-flight filter blockage

Increased Engine MTBUR

Improved protection from engine erosion

Increased Flight Safety

Excellent protection against FOD (Foreign Object Damage)

All Weather Protection

Excellent protection in Ice, Snow, Heavy Rain, and Salt Spray Conditions. Certified for flight in "known icing conditions"

Pall *PUREair* systems have been protecting helicopter engines since the 1960's. More than fifty different designs have been certified and operate worldwide. They are used on a variety of rotorcraft including AgustaWestland, Bell, Boeing, Denel, Enstrom, Airbus Helicopters, Kaman, MIL and Sikorsky.



Pall Corporation

Pall Aerospace


10540 Ridge Road
New Port Richey, FL 34654
+1 727 849 9999 telephone
+1 800 933 3111 toll free US

Portsmouth - UK
+44 (0)23 9233 8000 telephone
PUREair@pall.com

Visit us on the Web at www.pall.com/PUREair

Pall Corporation has offices and plants throughout the world. For Pall representatives in your area, please go to www.pall.com/contact

Because of technological developments related to the products, systems, and/or services described herein, the data and procedures are subject to change without notice. Please consult your Pall representative or visit www.pall.com to verify that this information remains valid. Products in this document may be covered by one or more of the following patent numbers: US 7,879,123.

© Copyright 2014, Pall Corporation. Pall, and  are trademarks of Pall Corporation.
® Indicates a trademark registered in the USA, and *Filtration. Separation. Solution.SM* is a service mark of Pall Corporation.